

# SILVER BIT

*Angus Ranch*

**33rd Annual**  
**Bull Sale**

**March 29, 2024**

**At the Ranch**

**62 Petersen Lane, May, ID 83253**

*Welcome to*  
*Silver Bit Angus Ranch's*  
*33rd Annual Bull Sale*

Welcome to our 33rd Annual spring bull sale. We'd like to thank all of our friends and customers. We really appreciate your business. It's been great to see the same faces over the last 33 years. We really can't thank you enough for your continued support over the years. We are very blessed to get to do what we love and make a successful business out of it. We are so lucky to live here, in Lemhi & Custer counties, where there are some of the best people and cattle anywhere. The years seem to be flying by, a lot of you have been a customer since our 1st sale. It's been fun for us to do business with the same families year after year. Now we are working with the 2nd generations & even 3rd generations of the customers we started out with. It means a lot to us. Thank You!

I also want to thank our crew. Gudberto, Stuart, Noe, & Axel. Sometimes it is tough, but we are blessed to have some loyal employees, that have been with us for years. Making sure everything is cared for and fed. We also couldn't keep this place going without my son Bob, who runs the farming end of things & keeps everything running around here. I also want to thank everyone that helps us at the bull sale. We have some great friends and neighbors that help us every year. We couldn't do it without you.

We are selling 88 yearling bulls. They have been on feed here at our ranch since last September. All bulls have been tested PI-BVD negative & Breeding Soundness Tested by Dr. Jeff Bennetts of Challis, ID and are guaranteed sound breeders. In Addition to our regular vaccination program, they have received wart vaccine & foot rot vaccine & boosted for both. We also Ultrasound tested for carcass data with Scott Nash of Southeast Idaho Ultrasound & all bulls were PAP tested by Dr JD Folsom of CHR. As always we stand behind our bulls 100%

We will also be selling approx. 250 Commercial Angus Replacement Heifers. 175 are home raised. They all received a Multimin 90 & Vision 8 at birth. Nasalgen & Pyramid 5 @ branding, boosted with Pyramid 5 + Presponse in May of 2023. At weaning they got Multimin 90, Vision 8, Pyramid 5 + Presponse & Clean Up II at weaning. 75 are purchased from Steve & Chip Johnson of Leadore, ID. All heifers have had Preguard Gold & MultiMin 90 in March 2024.

Silver Bit bulls come from one of the strongest herds of Angus cows anywhere. Wide based, easy fleshing, good footed, good milking, with tight udders & small teats. Lots of generations of breeding like kind to like kind for a consistent maternal package. We have expanded the purebred side of the program with our embryo program. We have picked out the top end cows of our herd to flush. Some are second and third generation flush cows that can trace back to Dixie Erica of C H 1019, one of the top cows in the angus breed. SAV Blackcap May 5833, who is a direct daughter of SAV Blackcap May 4136, which they have sold over 10 million dollars of off spring out of her. SAV Madame Pride 5807, who is a daughter out of SAV Madame Pride 0075, We are very pleased with the calves from this program. Rest assured you are getting a bull from the best of the best cows and proven AI sires in the breed.

This year the sale will be broadcast live on the internet with Superior Productions new bidding platform Bid.SuperiorLivestock.com. If you can't make it to the sale, you can register to bid online, or over the phone, just call 800-422-2117 for help getting registered. This will be our 20th year representing cattle on the Superior Livestock Video Auctions. . Superior has nationwide marketing with over 9000 registered buyers. We've developed a reputation for good quality cattle. Every Feedlot in the country watches the Summer Sales because they know the best calves in America will be on them. Last year Silver Bit sired calves topped the summer sales. Give us a call if we can help you market your calves on Superior

Sincerely,

Scott & Gwen Whitworth

# SILVER BIT

Angus Ranch

33rd  
Annual

## Bull Sale

Friday, March 29, 2024

Lunch @ Noon, Sale @ 1pm

### *Selling*

88- Yearling Black Angus Bulls

250- Top Quality

Home Raised & Purchased Local

Black Angus Replacement Heifers

For Information Contact– Scott or Gwen Whitworth

(208) 876-4226-home or (208) 940-0433-cell or [www.silverbitranch.net](http://www.silverbitranch.net)

Auctioneer– Joe Goggins, Billings, MT (406) 245-6447

Press Representatives-

Quanah Gardiner—American Angus Association (620) 635-0294

Devin Murnin – Western Livestock Journal (406) 696-1502

Jared Pattersen—Western Livestock Journal (208) 312-2386

Jake Pickering– Western Livestock Reporter (530) 415-5484

**SALE TIME-** 1:00pm (MST), Lunch will be served at 11:30am.

**SALE LOCATION-** Scott Whitworth Ranch, May, ID. On Hwy 93, turn west at Ellis Post Office. Go approx. 9 miles then turn right on Petersen Lane. Go approx. 1/2 mile. Sale barn is on the left.

**SALE DAY PHONES-** Office 208-876-4226; Sale Barn 208-876-4226; Scott's cell 208-940-0433; Gwen's cell 208-940-1507. Superior 800-422-2117.

**ACCOMMODATIONS-** In Challis, ID(30 miles)- Village Inn 208-879-2239 or Northgate Inn 208-879-2490. In Salmon, ID(55 miles)- Stagecoach Motel 208-756-2919.

**TRANSPORTATION-** Private planes can land in Challis & May. Upon request, we can pick you up.

**TERMS-** Terms of sale are cash. Silver Bit Angus Ranch will retain 1/3 semen interest in all bulls sold.

**TRUCKING-** Free delivery on Bulls to Idaho & adjoining states up to 500 miles. If outside the area, we will make arrangements and charge only our cost. Bring your trailer & take your bull home & receive \$50 per bull discount.

**BIDDING-** Each animal will be sold to the highest bidder. The auctioneer will settle any disputes as to bids & his decision shall be final.

**PURCHASER'S RISK-** Each animal becomes the risk of the purchaser as soon as sold, but shall be the obligation of the seller to see that the animals are fed & cared for, free of charge to purchaser, until loaded for shipment, or 48 hours, whichever occurs first.

**BREEDING GUARANTEE-** All animals are guaranteed to be breeders. Any bull which settles cows by service and passes a fertility test made by competent veterinarians, shall be considered a breeder. All bulls have been semen tested by Dr. Jeff

Bennetts of Challis, ID.

**FIRST YEAR BREEDING GUARANTEE-** All bulls sold for \$2500 or over in this sale will be covered 50% by Silver Bit Angus Ranch if they are injured during their first breeding season. Breeding season is defined as the 90 day period following the first turn out of the bulls. 50% of the value of the injured bull, less salvage value, will be given as a credit towards a replacement bull, if one is available, or as credit at our next bull sale. All injured bulls must be diagnosed by a veterinarian. Please notify us as soon as possible should injury occur, and prior to the injured bull being sold for salvage. All claims must be made by Sept. 1, 2024.

**VACCINATION PROGRAM-** Cows are vaccinated in the fall with Vision 8, Preguard Gold FP 10 & Multimin 90. All calves get Vision 8 & Multimin 90 at birth, Naselgen & Pyramid 5 at branding, boosted 4 weeks later, & Vision 8, Pyramid 5+ prespense, & pink eye @ weaning. All cattle are treated with Ivermectin for lice & internal parasites. The bulls get wart vaccine & Fusoguard in Nov & boosted in Jan. All Yearling bulls are tested BVD PI Negative, Ultrasound Carcass tested, PAP Tested & semen tested.

**LIABILITY-** All persons who attend the sale do so at their own risk. Silver Bit Ranch assumes no liability, legal or otherwise, for any accidents which may occur.



#### **VIEWING THE AUCTION ONLINE**

The auction will be broadcast online at [Bid.SuperiorLivestock.com](http://Bid.SuperiorLivestock.com) and the pre-recorded videos will also be hosted there prior to and on sale day. You do not need an account or login just to watch the auction.

#### **ONLINE BIDDING**

Go to [Bid.SuperiorLivestock.com](http://Bid.SuperiorLivestock.com) for Superior's new online bidding platform. If you have not registered there before you will need to create an account if you wish to bid (there is no registration required just to watch the auction). Once you have created an account, request a buyer number and you will then be able to bid online with the largest and most trusted cattle marketing entity in North America. Superior's new platform allows you to see both the live stream of the auction AND the pre-recorded videos on one screen at the same time!

#### **TURN IN BIDS OVER THE PHONE**

This is Superior's suggested bidding method for anybody who does not have consistent, high-speed internet. You still must register an account at [Bid.SuperiorLivestock.com](http://Bid.SuperiorLivestock.com) and request a buyer number and upon doing so you will see the bid line phone number. Just watch the auction online and call in at least 2 lots ahead of the lot you are looking to bid on.

**FOR HELP WITH REGISTRATION OR ANY PART OF THE BIDDING PROCESS PLEASE CALL SUPERIOR AT  
(800) 422-2117.**

## Reference Sires



### SAV BLOODLINE 9578

Calved 12/29/2018 #19542324

#### Production

CED	BW	WW	YW	RADG	DMI	YH	SC	Doc	Claw	Angle	PAP	HP	CEM	Milk	MW	MH	\$EN
-7	+4.3	+76	+143	+33	+1.47	+7	+56	+28	+44	+42	+2.52	+7.5	+8	+20	+139	+1.0	-52

SAV Rainfall 6846  
 Coleman Charlo 0256  
 SAV Blackcap May 4136  
 SAV 707 Rito 9969  
 Tehama Mary Blackbird Y684  
 SAV Emblynette 2369  
 OCC Paxton 730P  
 Bohi Abigale 6014  
 SAV 8180 Traveler 004  
 SAV May 2397  
 Rito 707 of Ideal 3407 7075  
 BR Polly 8077-472  
 SAV Net Worth 4200  
 SAV Emblynette 7261

#### Carcass

CW	Marb	RE	Fat
+63	+66	+37	-.030

#### \$Values

\$M	\$W	\$F	\$G	\$B	\$C
+22	+46	+111	+53	+164	+235

#### Maternal



### SAV Abundance 6117

Calved 02/24/2016 #18579265

#### Production

CED	BW	WW	YW	RADG	DMI	YH	SC	Doc	Claw	Angle	PAP	HP	CEM	Milk	MW	MH	\$EN
-2	+3.4	+65	+118	+27	+1.19	+2	+55	+12	+41	+35	+1.17	+13.4	-3	+17	+67	+1	-14

SAV Renown 3439  
 SAV Blackcap May 4136  
 SAV Net Worth 4200  
 SAV Emblynette 7563  
 SAV Emblynette 7261  
 Rito 707 of Ideal 3407 7075  
 R R Rito 707  
 Ideal 3407 of 1418 076  
 SAV 8180 Traveler 004  
 SAV May 2397  
 SAV 8180 Traveler 004  
 SAV May 2410  
 N Bar Emulation EXT  
 SAV Emblynette April 1509

#### Carcass

CW	Marb	RE	Fat
+40	+07	+74	+017

#### \$Values

\$M	\$W	\$F	\$G	\$B	\$C
+54	+46	+88	+24	+112	+199

#### Maternal



### SAV Glory Days 1832

Calved 12/28/2020 #20161297

#### Production

CED	BW	WW	YW	RADG	DMI	YH	SC	Doc	Claw	Angle	PAP	HP	CEM	Milk	MW	MH	\$EN
+0	+5.2	+76	+143	+36	+1.16	+5	+93	+38	+33	+45	+1.23	+4.0	+3	+19	+130	+7	-47

SAV America 8018  
 SAV Madame Pride 0075  
 SAV Priority 7283  
 SAV Madame Pride 3145  
 SAV Madame Pride 1171  
 SAV President 6847  
 Coleman Charlo 0256  
 SAV Blackcap May 4136  
 SAF 598 Bando 5175  
 SAV Madame Pride 8264  
 SAV Final Answer 0035  
 SAV Blackcap May 5530  
 SAV 707 Rito 9969  
 SAV Madame Pride 4466

#### Carcass

CW	Marb	RE	Fat
+69	+26	+81	-.046

#### \$Values

\$M	\$W	\$F	\$G	\$B	\$C
+28	+43	+128	+40	+168	+246

#### Maternal

## Reference Sires



### SAV Scale House 0845

Calved 12/13/2019 #20000000

#### Production

CED	BW	WW	YW	RADG	DMI	YH	SC	Doc	Claw	Angle	PAP	HP	CEM	Milk	MW	MH	\$EN
+4	+2.2	+77	+140	+27	+2.08	+8	+1.08	+23	+43	+47	+88	+7.0	+14	+17	+80	+5	-20

#### Carcass

CW	Marb	RE	Fat
+73	+.30	+71	-.030

#### \$Values

\$M	\$W	\$F	\$G	\$B	\$C
+55	+58	+119	+39	+158	+260

#### Maternal



### SAV Territory 7225

Calved 02/28/2017 #18913034

#### Production

CED	BW	WW	YW	RADG	DMI	YH	SC	Doc	Claw	Angle	PAP	HP	CEM	Milk	MW	MH	\$EN
+2	+2.8	+79	+134	+26	+1.20	+4	+99	+26	+50	+51	-1.73	+12.6	+5	+19	+102	+3	-32

#### Carcass

CW	Marb	RE	Fat
+59	+.24	+.95	+.055

#### \$Values

\$M	\$W	\$F	\$G	\$B	\$C
+53	+61	+99	+33	+132	+224

#### Maternal



### SAV RENOVATION 6822

Calved 01/28/2016 #18579309

#### Production

CED	BW	WW	YW	RADG	DMI	YH	SC	Doc	Claw	Angle	PAP	HP	CEM	Milk	MW	MH	\$EN
+3	+2.5	+66	+123	+24	+1.47	+3	+1.17	+20	+34	+32	+1.81	+11.4	+3	+16	+55	+0	-7

#### Carcass

CW	Marb	RE	Fat
+37	+.48	+.28	+.099

#### \$Values

\$M	\$W	\$F	\$G	\$B	\$C
+68	+48	+83	+32	+115	+217

#### Maternal

Sitz Upward 307R  
 Marcys Scale Crusher  
 Marcys Erica 393  
 Rito 707 of Ideal 3407 7075  
 SAV Blackcap May 1416  
 SAV Blackcap May 4136

Connealy Onward  
 Sitz Henrietta Pride 81M  
 Leachman Right Time  
 G Marcy Erica 118  
 R R Rito 707  
 Ideal 3407 of 1418 076  
 SAV 8180 Traveler 004  
 SAV May 2397

Rito 707 of Ideal 3407 7075  
 SAV Resource 1441  
 SAV Blackcap May 4136  
 SAV 004 Density 4336  
 SAV Emblynnette 3293  
 SAV Emblynnette 7411

R R Rito 707  
 Ideal 3407 of 1418 076  
 SAV 8180 Traveler 004  
 SAV May 2397  
 SAV 8180 Traveler 004  
 SAV May 7238  
 SAV Bismarck 5682  
 SAV Emblynnette 4408

Rito 707 of Ideal 3407 7075  
 SAV Renown 3439  
 SAV Blackcap May 4136  
 SAV 004 Density 4336  
 SAV Madame Pride 0151  
 SAV Madame Pride 0075

RR Rito 707  
 Ideal 3407 of 1418 076  
 SAV 8180 Traveler 004  
 SAV May 2397  
 SAV 8180 Traveler 004  
 SAV May 7238  
 SAV 598 Bando 5175  
 SAV Madame Pride 8264

# Reference Sires

<b>AAA 19852839</b>										Birth Date <u>12/09/19</u>									
Sitz Upward 307R Marcys Scale Crusher Marcys Erica 393 Rito 707 of Ideal 3407 7075 SAV Blackcap May 4136 SAV Blackcap May 4136										SAV Ease 0840									
CW	Marb	RE	Fat	\$M	\$W	\$F	\$G	\$B	\$C	CW	Marb	RE	Fat	\$M	\$W	\$F	\$G	\$B	\$C
+68	-.09	+1.07	-.054	+59	+66	+119	+26	+145	+247	+68	-.09	+1.07	-.054	+59	+66	+119	+26	+145	+247
CED	BW	WW	YW	Milk	SC	Doc	PAP	HP		CED	BW	WW	YW	Milk	SC	Doc	PAP	HP	
+5	+.4	+76	+138	+22	+.60	+26	+.53	+9.2		+5	+.4	+76	+138	+22	+.60	+26	+.53	+9.2	

<b>AAA 19250026</b>										Birth Date <u>02/05/18</u>									
Coleman Charlo 0256 SAV Rainfall 6846 SAV Blackcap May 4136 SAV Resource 1441 SAV Madame Pride 4407 SAV Madame Pride 0235										SAV Downpour 8794									
CW	Marb	RE	Fat	\$M	\$W	\$F	\$G	\$B	\$C	CW	Marb	RE	Fat	\$M	\$W	\$F	\$G	\$B	\$C
+66	+.53	+.81	+.044	+49	+57	+115	+46	+161	+258	+66	+.53	+.81	+.044	+49	+57	+115	+46	+161	+258
CED	BW	WW	YW	Milk	SC	Doc	PAP	HP		CED	BW	WW	YW	Milk	SC	Doc	PAP	HP	
+0	+4.6	+79	+151	+28	+2.06	+19	+1.23	+12.7		+0	+4.6	+79	+151	+28	+2.06	+19	+1.23	+12.7	

<b>AAA 18578964</b>										Birth Date <u>01/10/16</u>									
OCC Paxton 730P Coleman Charlo 0256 Bohi Abigale 6014 SAV 8180 Traveler 004 SAV Blackcap May 4136 SAV May 2397										SAV President 6847									
CW	Marb	RE	Fat	\$M	\$W	\$F	\$G	\$B	\$C	CW	Marb	RE	Fat	\$M	\$W	\$F	\$G	\$B	\$C
+34	-.02	+.86	-.027	+81	+73	+63	+25	+88	+195	+34	-.02	+.86	-.027	+81	+73	+63	+25	+88	+195
CED	BW	WW	YW	Milk	SC	Doc	PAP	HP		CED	BW	WW	YW	Milk	SC	Doc	PAP	HP	
+4	+3.4	+73	+121	+24	+.37	+27	+1.87	+12.5		+4	+3.4	+73	+121	+24	+.37	+27	+1.87	+12.5	

<b>AAA 18913003</b>										Birth Date <u>01/01/17</u>									
SAV Resource 1441 SAV Regard 4863 SAV Blackcap May 5530 SAV Final Answer 0035 SAV Blackcap May 3525 SAV May 2397										SAV Quarterback 7933									
CW	Marb	RE	Fat	\$M	\$W	\$F	\$G	\$B	\$C	CW	Marb	RE	Fat	\$M	\$W	\$F	\$G	\$B	\$C
+78	+.18	+1.15	+.011	+66	+71	+116	+36	+152	+263	+78	+.18	+1.15	+.011	+66	+71	+116	+36	+152	+263
CED	BW	WW	YW	Milk	SC	Doc	PAP	HP		CED	BW	WW	YW	Milk	SC	Doc	PAP	HP	
-5	+4.9	+95	+154	+22	+1.23	+30	+.94	+12.0		-5	+4.9	+95	+154	+22	+1.23	+30	+.94	+12.0	



## SBAR PRIDE 210-070

Calved 2-21-2010 #16865050

Production

CED	BW	WW	YW	RADG	DMI	YH	SC	Doc	Claw	Angle	PAP	HP	CEM	Milk	MW	MH	\$EN
+5	+1.8	+61	+116	+.24	+1.60	+.6	+.97	+12	+.50	+.45	-.06	+16.0	+5	+40	+34	+.1	-12

Sitz Upward 307R	Connealy Onward	Connealy Lead On
Sitz Henrietta Pride 81M	Sitz Henrietta Pride 81M	Altune of Conanga 6104
Sitz Alliance 6595	Sitz Alliance 6595	Sitz Value 7097
SBAR Pride 001-210	SBAR Pride 803-001	Sitz Henrietta Pride 1370
		Sitz Traveler 8180
		Sitz Barbaramere Jet 2698
		N Bar Emulation EXT
		TPC RR Pride 1420-803

Carcass

\$Values

PROD	CW	Marb	RE	Fat	\$M	\$W	\$F	\$G	\$B	\$C
9/110	+47	+.38	+.41	+.034	+79	+68	+84	+36	+119	+233

Maternal



# Reference Sires

## Con't

**AAA 19901548**

Birth Date 02/20/20

Coleman Charlo 0256  
 SAV President 6847  
 SBAR President 0105  
 SAV Blackcap May 4136  
 Sitz Upward 307R  
 SBAR Pride 210-079  
 SBAR Pride 001-210

CW	Marb	RE	Fat	\$M	\$W	\$F	\$G	\$B	\$C
+39	+/26	+53	-.011	+73	+76	+59	+33	+92	+192
CED	BW	WW	YW	Milk	SC	Doc	PAP	HP	
+4	+2.6	+70	+120	+36	+74	+20	-.59	+7.9	

**AAA 19912516**

Birth Date 02/20/20

SAV Resource 1441  
 SAV Territory 7225  
 SBAR Territory 0130  
 SAV Emblynette 3293  
 Sitz Upward 307R  
 SBAR Pride 210-070  
 SBAR Pride 001-210

CW	Marb	RE	Fat	\$M	\$W	\$F	\$G	\$B	\$C
+61	+32	+80	+038	+41	+69	+97	+36	+133	+214
CED	BW	WW	YW	Milk	SC	Doc	PAP	HP	
+1	+2.9	+78	+139	+30	+1.19	+14	-1.25	+9.4	

**AAA 19901551**

Birth Date 02/16/20

SAV Resource 1441  
 SAV Territory 7115  
 SBAR Territory 0088  
 SAV Emblynette 3293  
 Sitz Upward 307R  
 SBAR Pride 210-070  
 SBAR Pride 001-210

CW	Marb	RE	Fat	\$M	\$W	\$F	\$G	\$B	\$C
+47	+17	+82	+028	+62	+64	+81	+29	+110	+205
CED	BW	WW	YW	Milk	SC	Doc	PAP	HP	
+2	+2.1	+74	+131	+24	+23	+30	-1.41	+12.9	

**AAA 19901456**

Birth Date 02/10/20

Coleman Charlo 0256  
 SAV Rainfall 6846  
 SBAR Rainfall 066  
 SAV Blackcap May 4136  
 Sitz Upward 307R  
 SBAR Pride 210-070  
 SBAR Pride 001-210

CW	Marb	RE	Fat	\$M	\$W	\$F	\$G	\$B	\$C
+39	+48	+38	+004	+66	+63	+74	+41	+116	+216
CED	BW	WW	YW	Milk	SC	Doc	PAP	HP	
+3	+2.5	+66	+118	+27	+1.14	+18	+1.13	+11.1	

**AAA 19629457**

Birth Date 02/21/19

Rito 707 of Ideal 3407 7075  
 SAV Renown 3439  
 SBAR Renown 9002  
 SAV Blackcap May 4136  
 Sitz Dimension 8607  
 SBAR Kinochtry Beauty 2009  
 SBAR Kinochtry Beauty 304-54

CW	Marb	RE	Fat	\$M	\$W	\$F	\$G	\$B	\$C
+22	+22	+66	+013	+59	+40	+70	+31	+101	+190
CED	BW	WW	YW	Milk	SC	Doc	PAP	HP	
+5	-.3	+43	+87	+23	+1.85	+26	-.01	+13.1	

**AAA 19901618**

Birth Date 02/18/20

SITZ Response 405C  
 Sitz Tucker 282E  
 SBAR Maternal Power 0098  
 Sitz Elsiemere 52R  
 SAV Registry 2831  
 SAV Blackcap May 5833  
 SAV Blackcap May 4136

CW	Marb	RE	Fat	\$M	\$W	\$F	\$G	\$B	\$C
+66	+08	+87	-.012	+52	+56	+112	+29	+141	+235
CED	BW	WW	YW	Milk	SC	Doc	PAP	HP	
+2	+4.0	+75	+140	+22	+1.15	+27	+1.16	+7.2	

**AAA 20281990**

Birth Date 02/13/21

SAV Resource 1441  
 SAV Territory 7225  
 SBAR Territory 168  
 SAV Emblynette 3293  
 Sitz Upward 307R  
 SBAR Pride 210-070  
 SBAR Pride 001-210

CW	Marb	RE	Fat	\$M	\$W	\$F	\$G	\$B	\$C
+57	+02	+58	+035	+58	+60	+96	+18	+114	+206
CED	BW	WW	YW	Milk	SC	Doc	PAP	HP	
-2	+4.2	+77	+135	+24	+1.17	+22	-.67	+12.7	



**LOT 1** AAA 20843889 Birth Date 2/25/23  
*EMBRYO*

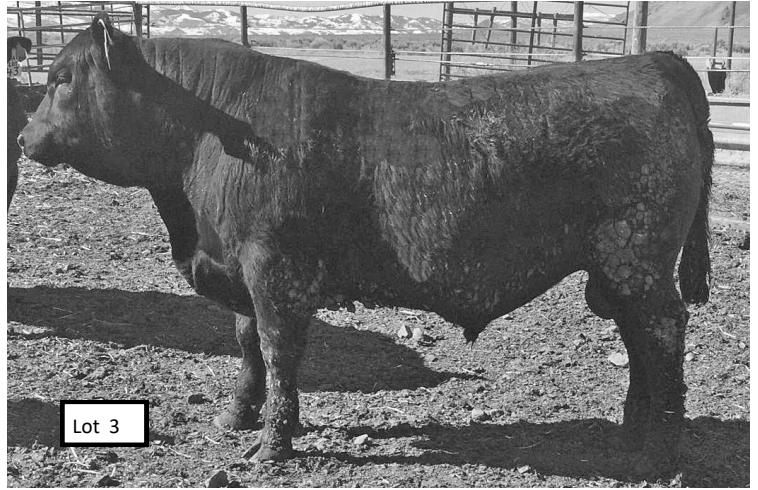
**w381**

Marcys Scale Crusher  
 SAV Scale House 0845  
 SAV Blackcap May 1416  
**SBAR Scale House 381**  
 Sitz Upward 307R  
 SBAR Pride 210-070  
 SBAR Pride 001-210

BW	82
NOV #	915
ADJ 205	740
Act WR	114
ADJ 365	1282
Act YR	112
SALE #	1375
PAP	42

BW	WW	YW	Milk
+2.7	+72	+131	+27

HD50K



**LOT 2** AAA 20844003 Birth Date 2/25/23  
*EMBRYO*

**w378**

SAV Regard 4863  
 SAV Quarterback 7933  
 SAV Blackcap May 3525  
**SBAR Quarterback 378**  
 SAV Bismarck 5682  
 SBAR Blackbird 065-222  
 SBAR Blackbird 4296-065

BW	87
NOV #	860
ADJ 205	713
Act WR	109
ADJ 365	1244
Act YR	109
SALE #	1335
PAP	45

BW	WW	YW	Milk
+2.4	+81	+141	+31

HD50K

**LOT 3** AAA 20844071 Birth Date 2/20/23

**w338**

SAV Resource 1441  
 SAV Territory 7225  
 SAV Emblynette 3293  
**SBAR Territory 338**  
 SAV Bismarck 5682  
 SBAR Dixie Erica 965-573  
 SBAR Dixie Erica 129-965

BW	85
NOV #	850
ADJ 205	703
Act WR	109
ADJ 365	1322
Act YR	116
SALE #	1380
PAP	31

BW	WW	YW	Milk
+2.5	+73	+124	+23

HD50K



© Kir Lambert

**LOT 4** AAA 20842877 Birth Date 3/12/23

**w3085**

SAV Territory 7225  
 SBAR Territory 0130  
 SBAR Pride 210-070  
**SBAR Territory 0130-3085**  
 Connealy Front & Center  
 SBAR Blackbird 6064-862  
 SBAR Blackbird 728-6064

BW	82
NOV #	805
ADJ 205	721
Act WR	106
ADJ 365	1270
Act YR	110
SALE #	1295
PAP	39

BW	WW	YW	Milk
+2.3	+78	+143	+30

HD50K



**LOT 7** AAA 20842869

Birth Date 2/23/23

**w3003**

BW	90
NOV #	850
ADJ 205	718
Act WR	111
ADJ 365	1214
Act YR	107
SALE #	1285
PAP	45

SAV Rainfall 6846  
 SAV Bloodline 9578  
 SAV Emblynette 2369  
**SBAR Bloodline 3003**  
 Connealy Final Product  
 SBAR Rachel 717-477  
 SBAR Rachel 455-717

BW	WW	YW	Milk
+2.2	+70	+130	+35

HD50K

**LOT 5** AAA 20842889

Birth Date 3/24/23

**w3133**

BW	80
NOV #	860
ADJ 205	773
Act WR	109
ADJ 365	1315
Act YR	109
SALE #	1310
PAP	48

SAV Territory 7225  
 SBAR Territory 0130  
 SBAR Pride 210-070  
**SBAR Territory 0130-3133**  
 Sitz Investment 660Z  
 SBAR Dixie Erica 7011-6091  
 SBAR Dixie Erica 129-7011

BW	WW	YW	Milk
+3.1	+77	+137	+29

HD50K



**LOT 8** AAA 20843896

Birth Date 2/28/23

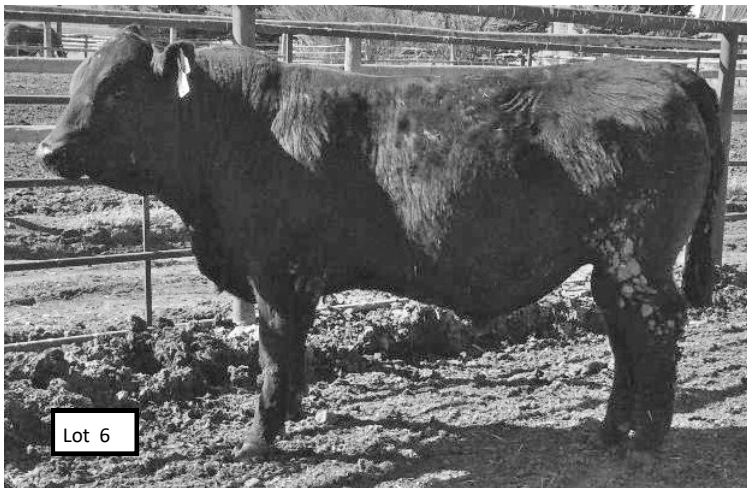
**w3061**

BW	80
NOV #	830
ADJ 205	723
Act WR	110
ADJ 365	1190
Act YR	104
SALE #	1255
PAP	38

SAV Renown 3439  
 SAV Renovation 6822  
 SAV Madame Pride 0151  
**SBAR Renovation 3061**  
 SAV Bloodline 9578  
 SAV Madame Pride 1053  
 SBAR Madame Pride 3256

BW	WW	YW	Milk
+5.4	+71	+121	+17

HD50K



**LOT 6** AAA 20842895

Birth Date 3/07/23

**w3065**

BW	95
NOV #	880
ADJ 205	759
Act WR	111
ADJ 365	1226
Act YR	106
SALE #	1260
PAP	37

SAV Territory 7225  
 SBAR Territory 0088  
 SBAR Pride 210-070  
**SBAR Territory 0088-3065**  
 SAV Resource 1441  
 SBAR Dixie Erica 969-9076  
 SBAR Dixie Erica 129-969

BW	WW	YW	Milk
+5.4	+82	+142	+28

HD50K

**LOT 9** AAA 20842876

Birth Date 3/20/23

**w3119**

BW	86
NOV #	800
ADJ 205	721
Act WR	106
ADJ 365	1223
Act YR	108
SALE #	1235
PAP	50+

SAV Cutting Edge 4857  
 SBAR Cutting Edge 0128  
 SAV Blackcap May 5833  
**SBAR Cutting Edge 0128-3119**  
 Connealy Conquest  
 SBAR Dixie Erica 6098-824  
 SBAR Dixie Erica 995-6098

BW	WW	YW	Milk
+5.3	+77	+136	+15

HD50K

LOT 10 AAA 20842888 Birth Date 3/19/23

# w3115

BW	78
NOV #	850
ADJ 205	728
Act WR	105
ADJ 365	1219
Act YR	106
SALE #	1235
PAP	43

SAV Territory 7225  
 SBAR Territory 0130  
 SBAR Pride 210-070  
**SBAR Territory 0130-3115**  
 SBAR Final Answer 857-424  
 SBAR Blackbird 456-6090  
 SBAR Blackbird 647-456

BW	WW	YW	Milk
+2.1	+78	+129	+29

HD50K



LOT 13 AAA 20843882 Birth Date 2/28/23

EMBRYO

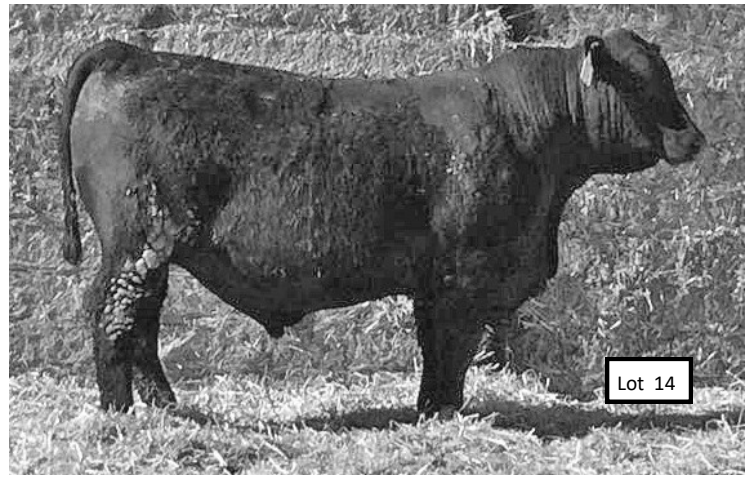
# w3030

BW	80
NOV #	805
ADJ 205	728
Act WR	101
ADJ 365	1219
Act YR	108
SALE #	1280
PAP	45

SAV Rainfall 6846  
 SAV Bloodline 9578  
 SAV Emblynette 2369  
**SBAR Bloodline 3030**  
 Sitz Upward 307R  
 SBAR Pride 210-070  
 SBAR Pride 001-210

BW	WW	YW	Milk
+4.0	+70	+131	+27

HD50K



LOT 11 AAA 20842893 Birth Date 3/01/23

# w3026

BW	81
NOV #	890
ADJ 205	763
Act WR	116
ADJ 365	1283
Act YR	114
SALE #	1340
PAP	48

SAV Territory 7225  
 SBAR Territory 181  
 SBAR Emma E 207-20  
**SBAR Territory 181-3026**  
 Sitz Upward 307R  
 SBAR Dixie Erica 081-8128  
 SBAR Dixie Erica 789-081

BW	WW	YW	Milk
+1.4	+72	+124	+25

HD50K

LOT 12 AAA 20908055 Birth Date 2/19/23

# w3102

BW	90
NOV #	850
ADJ 205	653
Act WR	112
ADJ 365	1187
Act YR	109
SALE #	1290
PAP	38

SAV Rainfall 6846  
 SAV Bloodline 9578  
 SAV Emblynette 2369  
**SBAR Bloodline 3102**  
 SBAR Tour of Duty 711  
 SBAR Dixie Erica 9078  
 SBAR Dixie Erica 6091

BW	WW	YW	Milk
+4.9	+84	+145	+25

HD50K

LOT 14 AAA 20842873 Birth Date 2/18/23

# w315

BW	87
NOV #	825
ADJ 205	713
Act WR	112
ADJ 365	1215
Act YR	105
SALE #	1295
PAP	42

SAV Rainfall 6846  
 SAV Bloodline 9578  
 SAV Emblynette 2369  
**SBAR Bloodline 315**  
 SAV Resource 1441  
 SBAR Pride 070-731  
 SBAR Pride 210-070

BW	WW	YW	Milk
+2.1	+70	+138	+32

HD50K

LOT 15 AAA 20842872 Birth Date 2/18/23

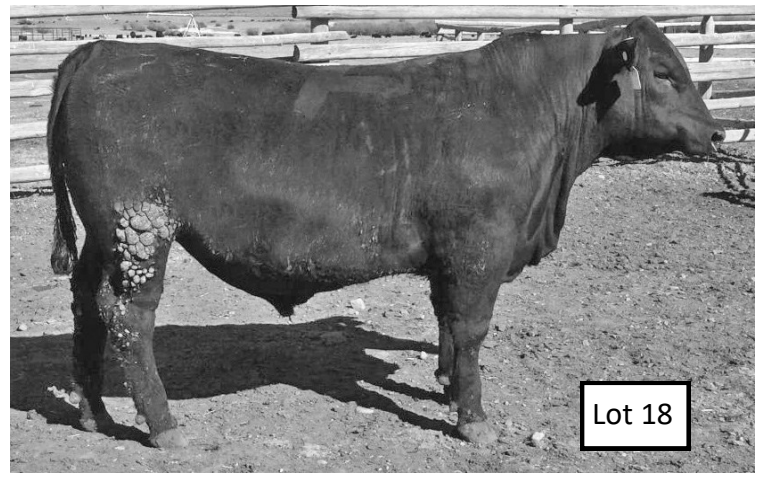
# w332

BW	82
NOV #	850
ADJ 205	755
Act WR	102
ADJ 365	1116
Act YR	101
SALE #	1205
PAP	37

SAV Rainfall 6846  
 SAV Bloodline 9578  
 SAV Emblynette 2369  
**SBAR Bloodline 332**  
 Connealy Final Product  
 SBAR Dixie Erica 2023-601  
 SBAR Dixie Erica 129-2023

BW	WW	YW	Milk
+2.7	+74	+130	+21

HD50K



**LOT 16** AAA 20849548 Birth Date 2/27/23

EMBRYO

**w3011**

BW	82
NOV #	820
ADJ 205	702
Act WR	107
ADJ 365	1163
Act YR	104
SALE #	1230
PAP	44

SAV Renown 3439  
 SAV Abundance 6117  
 SAV Emblynette 7563  
**SBAR Abundance 3011**  
 Sitz Upward 307R  
 SBAR Pride 210-070  
 SBAR Pride 001-210

BW	WW	YW	Milk
+3.0	+58	+111	+30

HD50K

**LOT 18** AAA 20842886 Birth Date 2/19/23

**w325**

BW	87
NOV #	800
ADJ 205	665
Act WR	104
ADJ 365	1249
Act YR	108
SALE #	1310
PAP	42

Coleman Charlo 0256  
 SAV President 6847  
 SAV Blackcap May 4136  
**SBAR President 323**  
 Connealy Final Product  
 SBAR Emblynette 235-6005  
 SAV Emblynette 235

BW	WW	YW	Milk
+3.6	+74	+130	+26

HD50K



**LOT 17** AAA 20842891 Birth Date 3/01/23

**w3056**

BW	82
NOV #	765
ADJ 205	697
Act WR	106
ADJ 365	1199
Act YR	106
SALE #	1255
PAP	40

SAV America 8018  
 SAV Glory Days 1832  
 SAV Madame Pride 3145  
**SBAR Glory Days 3056**  
 SAV Resource 1441  
 SBAR Rachel 5036-8090  
 SBAR Rachel 913-5036

BW	WW	YW	Milk
+4.7	+62	+120	+22

HD50K

**LOT 19** Birth Date 2/15/23

**y3004**

BW	85
NOV #	860
ADJ 205	697
Act WR	110
ADJ 365	1205
Act YR	111
SALE #	1315
PAP	39

SAV President 6847  
 SBAR President 0105  
 SBAR Pride 210-070  
**SBAR #3004**  
 Sitz Investment 660Z  
 SBAR #6119  
 SBAR #3059

BW	WW	YW	Milk
+2.0	+68	+121	+32

**LOT 20** AAA 20844004 Birth Date 3/05/23

**y3064**

BW	80
NOV #	805
ADJ 205	687
Act WR	105
ADJ 365	1236
Act YR	109
SALE #	1285
PAP	40

SAV Territory 7225  
 SBAR Territory 0088  
 SBAR Pride 210-070  
**SBAR #3064**  
 Sitz Tucker 282E  
 SBAR #R815  
 SBAR #662

BW	WW	YW	Milk
+2.9	+60	+116	+23

**LOT 23** AAA 20844004 Birth Date 2/26/23  
*EMBRYO*

**w394**

BW	78
NOV #	820
ADJ 205	679
Act WR	105
ADJ 365	1172
Act YR	103
SALE #	1235
PAP	50+

SAV Regard 4863  
 SAV Quarterback 7933  
 SAV Blackcap May 3525  
**SBAR Quarterback 394**  
 SAV Bismarck 5682  
 SBAR Blackbird 065-222  
 SBAR Blackbird 4296-065

BW	WW	YW	Milk
+4.1	+78	+123	+24

HD50K

**LOT 21** AAA 20842880 Birth Date 2/27/23  
*EMBRYO Recommended for Heifers*

**w3019**

BW	82
NOV #	820
ADJ 205	725
Act WR	106
ADJ 365	1203
Act YR	104
SALE #	1230
PAP	42

Marcys Scale Crusher  
 SAV Scale House 0845  
 SAV Blackcap May 1416  
**SBAR Scale House 3019**  
 SAV President 6847  
 SBAR Pride 070-0050  
 SBAR Pride 210-070

BW	WW	YW	Milk
+1.1	+72	+137	+28

HD50K

**LOT 24** AAA 20844005 Birth Date 3/01/23  
*EMBRYO Recommended for Heifers*

**w3007**

BW	78
NOV #	830
ADJ 205	720
Act WR	109
ADJ 365	1176
Act YR	103
SALE #	1240
PAP	48

SAV Regard 4863  
 SAV Quarterback 7933  
 SAV Blackcap May 3525  
**SBAR Quarterback 3007**  
 SAV Bismarck 5682  
 SBAR Blackbird 065-222  
 SBAR Blackbird 4296-065

BW	WW	YW	Milk
+1.4	+77	+122	+32

HD50K



**LOT 22** AAA 20843887 Birth Date 2/18/23  
*EMBRYO*

**w342**

BW	82
NOV #	805
ADJ 205	626
Act WR	98
ADJ 365	1164
Act YR	102
SALE #	1230
PAP	37

Marcys Scale Crusher  
 SAV Scale House 0845  
 SAV Blackcap May 1416  
**SBAR Scale House 342**  
 Sitz Upward 307R  
 SBAR Pride 210-070  
 SBAR Pride 001-210

BW	WW	YW	Milk
+1.9	+72	+134	+29

HD50K

**LOT 25** AAA 20842865 Birth Date 2/15/23

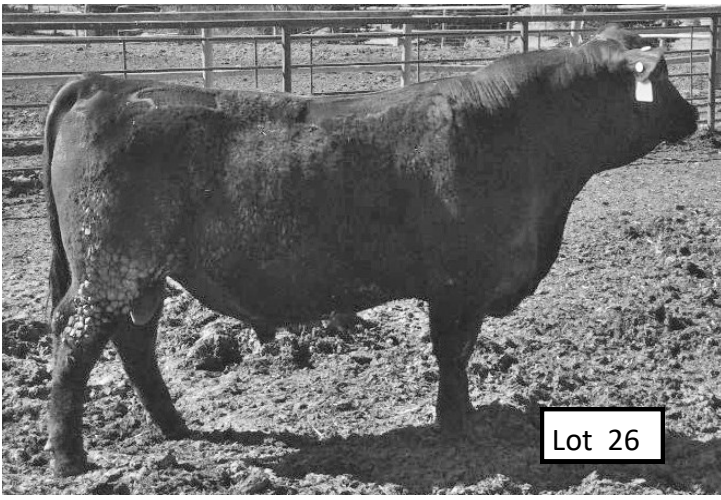
**w309**

BW	80
NOV #	830
ADJ 205	730
Act WR	105
ADJ 365	1197
Act YR	102
SALE #	1215
PAP	44

Tehama Upward Y238  
 Tehama Tahoe B767  
 Tehama Mary Blackbird Y684  
**SBAR Tahoe 309**  
 SAV Territory 7225  
 SBAR Blackcap May 5833-111  
 SAV Blackcap May 5833

BW	WW	YW	Milk
+2.2	+88	+158	+22

HD50K



Livestock Auction

**ALL NEW PUREBRED PLATFORM**  
 Bid.SuperiorLivestock.com

**LOT 26** Birth Date 3/15/23

**y3161**

BW	85
NOV #	865
ADJ 205	770
Act WR	112
ADJ 365	1255
Act YR	107
SALE #	1285
PAP	50+

SAV Territory 7225  
 SBAR Territory 0088  
**SBAR 3161**  
 SBAR Pride 210-070  
 SBAR Final Product 412  
 SBAR #7530  
 SBAR #5012

BW	WW	YW	Milk
+2.7	+65	+115	+25

**LOT 29** AAA 20842868 Birth Date 4/01/23

**w3176**

BW	88
NOV #	770
ADJ 205	733
Act WR	107
ADJ 365	1229
Act YR	100
Act YR	1210
PAP	45

SAV President 6847  
 SBAR President 0105  
**SBAR President 0105-3176**  
 SBAR Pride 210-070  
 Connealy Final Product  
 SBAR Dixie Erica 7011-450  
 SBAR Dixie Erica 129-7011

BW	WW	YW	Milk
+1.0	+67	+115	+24

HD50K

**LOT 27** Birth Date 3/16/23

**y3174**

BW	82
NOV #	845
ADJ 205	739
Act WR	107
ADJ 365	1235
Act YR	106
SALE #	1260
PAP	41

SAV President 6847  
 SBAR President 0105  
**SBAR 3174**  
 SBAR Pride 210-070  
 SBAR Objective 9011  
 SBAR #4242  
 SBAR #2138

BW	WW	YW	Milk
2.0	+63	+109	+31



**LOT 28** Birth Date 2/28/23

**y3058**

BW	82
NOV #	885
ADJ 205	738
Act WR	114
ADJ 365	1261
Act YR	104
SALE #	1250
PAP	36

SAV President 6847  
 SBAR President 092  
**SBAR #3058**  
 SAV Blackcap May 5833  
 SBAR Resource 710  
 SBAR #w301  
 SBAR #1027

BW	WW	YW	Milk
+3.8	+65	+123	+20

**LOT 30** AAA 20843886 Birth Date 2/19/23

EMBRYO

**w3014**

BW	85
NOV #	730
ADJ 205	628
Act WR	100
ADJ 365	1106
Act YR	100
SALE #	1180
PAP	40

SAV Renown 3439  
 SAV Renovation 6822  
 SAV Madame Pride 0151  
**SBAR Renovation 3014**  
 Sitz Upward 307R  
 SBAR Pride 210-070  
 SBAR Pride 001-210

BW	WW	YW	Milk
+1.8	+55	+109	+34

HD50K



**LOT 34** AAA 20842874 Birth Date 2/15/23

**w307**

BW	85
NOV #	835
ADJ 205	690
Act WR	109
ADJ 365	1168
Act YR	106
SALE #	1255
PAP	42

SAV Rainfall 6846  
 SAV Bloodline 9578  
 SAV Emblynette 2369  
**SBAR Bloodline 307**  
 SAV Bruiser 9164  
 SBAR Dixie Erica 574-764  
 SBAR Dixie Erica 142-574

BW	WW	YW	Milk
+7	+65	+120	+26

HD50K

**LOT 31** AAA 20844012 Birth Date 2/20/23

EMBRYO

**w339**

BW	85
NOV #	830
ADJ 205	662
Act WR	103
ADJ 365	1246
Act YR	110
SALE #	1215
PAP	37

Marcys Scale Crusher  
 SAV Scale House 0845  
 SAV Blackcap May 1416  
**SBAR Scale House 339**  
 SAV International 2020  
 SAV Madame Pride 5807  
 SAV Madame Pride 0075

BW	WW	YW	Milk
+3.8	+70	+115	+23

HD50K

**LOT 35** Birth Date 3/14/23

Recommended for Heifers

**w3093**

BW	74
NOV #	790
ADJ 205	681
Act WR	103
ADJ 365	1200
Act YR	105
SALE #	1245
PAP	46

SAV Territory 7225  
 SAV Territory 0088  
 SBAR Pride 210-070  
**SBAR 3093**  
 SAV Final Answer 0035  
 SBAR Pride 050-4011  
 SBAR Pride 001-050

BW	WW	YW	Milk
+1.5	+65	+112	+21

**LOT 32** AAA 20858328 Birth Date 3/02/23

EMBRYO

**w3040**

BW	85
NOV #	830
ADJ 205	789
Act WR	107
ADJ 365	1250
Act YR	111
SALE #	1315
PAP	41

SAV Rainfall 6846  
 SAV Bloodline 9578  
 SAV Emblynette 2369  
**SBAR Bloodline 3040**  
 Sitz Upward 307R  
 SBAR Pride 210-070  
 SBAR Pride 001-210

BW	WW	YW	Milk
+4.8	+85	+153	+33

HD50K

**LOT 36** AAA 20844001 Birth Date 2/22/23

EMBRYO

**w350**

BW	85
NOV #	795
ADJ 205	716
Act WR	108
ADJ 365	1154
Act YR	105
SALE #	1235
PAP	48

SAV Regard 4863  
 SAV Quarterback 7933  
 SAV Blackcap May 3525  
**SBAR Quarterback 350**  
 SAV Bismarck 5682  
 SBAR Blackbird 065-222  
 SBAR Blackbird 4296-065

BW	WW	YW	Milk
+3.9	+82	+130	+22

HD50K

**LOT 33** AAA 20844013 Birth Date 2/19/23

EMBRYO

**w334**

BW	90
NOV #	845
ADJ 205	702
Act WR	109
ADJ 365	1176
Act YR	106
SALE #	1255
PAP	50+

SAV Rainfall 6846  
 SAV Downpour 8794  
 SAV Madame Pride 4407  
**SBAR Downpour 334**  
 SAV International 2020  
 SAV Madame Pride 5807  
 SAV Madame Pride 0075

BW	WW	YW	Milk
+4.6	+75	+134	+21

HD50K

**LOT 37** AAA 20842881 Birth Date 2/24/23

**w395**

BW	88
NOV #	775
ADJ 205	673
Act WR	99
ADJ 365	1198
Act YR	104
SALE #	1235
PAP	38

SAV America 8018  
 SAV Glory Days 1832  
 SAV Madame Pride 3145  
**SBAR Glory Days 395**  
 N Bar Emulation EXT  
 SBAR Pride 115-1000  
 SBAR Pride 115

BW	WW	YW	Milk
+3.2	+61	+112	+18

HD50K



**LOT 38** AAA 20843893 Birth Date 2/23/23

EMBRYO

**w367**

BW	81
NOV #	780
ADJ 205	662
Act WR	102
ADJ 365	1153
Act YR	103
SALE #	1220
PAP	43

SAV America 8018  
 SAV Glory Days 1832  
 SAV Madame Pride 3145  
**SBAR Glory Days 367**  
 SAV Bloodline 9578  
 SAV Madame Pride 1053  
 SAV Madame Pride 3256

BW	WW	YW	Milk
+4.0	+69	+135	+24

HD50K



**LOT 39** AAA 20849552 Birth Date 2/27/23

EMBRYO

**w3012**

BW	88
NOV #	820
ADJ 205	731
Act WR	112
ADJ 365	1169
Act YR	104
SALE #	1240
PAP	45

SAV Renown 3439  
 SAV Abundance 6117  
 SAV Emblynette 7563  
**SBAR Abundance 3012**  
 Sitz Upward 307R  
 SBAR Pride 210-070  
 SBAR Pride 001-210

BW	WW	YW	Milk
+2.1	+75	+134	+32

HD50K

**LOT 41** AAA 20843891 Birth Date 3/01/23

EMBRYO

**w3219**

BW	82
NOV #	775
ADJ 205	655
Act WR	99
ADJ 365	1215
Act YR	104
SALE #	1245
PAP	41

Marcys Scale Crusher  
 SAV Scale House 0845  
 SAV Blackcap May 1416  
**SBAR Scale House 3219**  
 Sitz Upward 307R  
 SBAR Pride 210-070  
 SBAR Pride 001-210

BW	WW	YW	Milk
+1.4	+71	+130	+31

HD50K



**LOT 42** AAA 20843888 Birth Date 2/23/23

EMBRYO Recommended for Heifers

**w369**

BW	80
NOV #	830
ADJ 205	657
Act WR	101
ADJ 365	1131
Act YR	99
SALE #	1200
PAP	33

Marcys Scale Crusher  
 SAV Scale House 0845  
 SAV Blackcap May 1416  
**SBAR Scale House 369**  
 Sitz Upward 307R  
 SBAR Pride 210-070  
 SBAR Pride 001-210

BW	WW	YW	Milk
+1.3	+71	+133	+29

HD50K

**LOT 40** AAA 20842879 Birth Date 2/19/23

Recommended for Heifers

**w333**

BW	75
NOV #	700
ADJ 205	701
Act WR	104
ADJ 365	1186
Act YR	103
SALE #	1225
PAP	50+

Sitz Tucker 282E  
 SBAR Maternal Power 0098  
 SAV Blackcap May 5833  
**SBAR Maternal Power 0098-333**  
 Sitz Tucker 292E  
 SBAR Dixie Erica 8098-0025  
 SBAR Dixie Erica 965-8098

BW	WW	YW	Milk
+1.8	+68	+128	+21

HD50K

**LOT 43** Birth Date 3/12/23

**y3126**

BW	85
NOV #	745
ADJ 205	610
Act WR	90
ADJ 365	1217
Act YR	104
SALE #	1235
PAP	45

SAV Cutting Edge 4857  
 SBAR Cutting Edge 0128  
 SAV Blackcap May 5833  
**SBAR #3126**  
 MAR Innovation 251  
 SBAR #8177  
 SBAR #212

BW	WW	YW	Milk
+4.3	+77	+136	+19



**LOT 44** \_\_\_\_\_ Birth Date 3/06/23  
*Recommended for Heifers*

**y3077**

SAV Territory 7225  
 SBAR Territory 0130  
 SBAR Pride 210-070  
**SBAR #3077**  
 SBAR Resource 710  
 SBAR #0273  
 SBAR #5006

BW	75
NOV #	750
ADJ 205	701
Act WR	100
ADJ 365	1232
Act YR	105
SALE #	1240
PAP	44

BW	WW	YW	Milk
+2.1	+67	+119	+27

**LOT 47** \_\_\_\_\_ Birth Date 3/10/23

**y3113**

SAV Territory 7225  
 SAV Territory 0088  
 SBAR Pride 210-070  
**SBAR #3113**  
 SBAR Final Product 412  
 SBAR #6178  
 SBAR #5314

BW	82
NOV #	825
ADJ 205	675
Act WR	109
ADJ 365	1120
Act YR	99
SALE #	1195
PAP	37

BW	WW	YW	Milk
+2.5	+65	+112	+21

**LOT 45** \_\_\_\_\_ Birth Date 3/24/23

**w3139**

SAV Territory 7225  
 SBAR Territory 0130  
 SBAR Pride 210-070  
**SBAR Territory 0130-3139**  
 SAV Resource 1441  
 SBAR Blackbird 778-097  
 SBAR Blackbird 4296-778

BW	70
NOV #	725
ADJ 205	677
Act WR	99
ADJ 365	1197
Act YR	102
SALE #	1155
PAP	35

BW	WW	YW	Milk
+3.7	+51	+97	+29

**LOT 48** AAA 20842867 Birth Date 2/15/23  
*Recommended for Heifers*

**w310**

Marcys Scale Crusher  
 SAV Ease 0840  
 SAV Blackcap May 1416  
**SBAR Ease 310**  
 SAV Rainfall 6846  
 SBAR Blackbird 906-198  
 SBAR Blackbird 7103-906

BW	65
NOV #	735
ADJ 205	683
Act WR	98
ADJ 365	1161
Act YR	98
SALE #	1175
PAP	38

BW	WW	YW	Milk
-.4	+67	+123	+23

HD50K

**LOT 46** AAA 20842884 Birth Date 3/17/23

**w3108**

SAV Territory 7225  
 SAV Territory 0088  
 SBAR Pride 210-070  
**SBAR Territory 0088-3108**  
 Apex Windy 078  
 SBAR Barbaramere 057-4002  
 SBAR Barbaramere 209-057

BW	82
NOV #	785
ADJ 205	688
Act WR	99
ADJ 365	1149
Act YR	100
SALE #	1175
PAP	50+

BW	WW	YW	Milk
+3.7	+63	+109	+30

HD50K

**LOT 49** AAA 20842885 Birth Date 3/18/23  
*Recommended for Heifers*

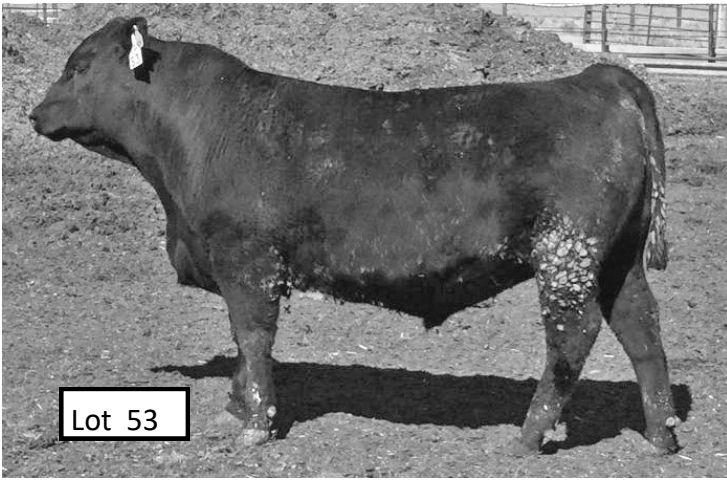
**w3114**

SAV President 6847  
 SBAR President 0105  
 SBAR Pride 210-070  
**SBAR President 0105-3114**  
 SBAR Final Answer 907-1016  
 SBAR Blackbird 893-4034  
 SBAR Blackbird 647-893

BW	75
NOV #	720
ADJ 205	651
Act WR	94
ADJ 365	1107
Act YR	96
SALE #	1130
PAP	49

BW	WW	YW	Milk
-.4	+65	+107	+30

HD50K



**LOT 53**

Birth Date 3/19/23

*Recommended for Heifers*

**y3027**

BW	78
NOV #	760
ADJ 205	620
Act WR	97
ADJ 365	1200
Act YR	102
SALE #	1190
PAP	46

SAV Territory 7225  
 SBAR Territory 0130  
 SBAR Pride 210-070  
**SBAR 3027**  
 SBAR Final Answer 857-424  
 SBAR #796  
 SBAR #5017

BW	WW	YW	Milk
+2.1	+67	+119	+28

**LOT 50**

Birth Date 3/11/23

**y3116**

BW	82
NOV #	780
ADJ 205	675
Act WR	100
ADJ 365	1171
Act YR	100
SALE #	1210
PAP	48

SAV President 6847  
 SBAR President 092  
 SAV Blackcap May 5833  
**SBAR #3116**  
 MOGCK Sure Shot  
 SBAR #4095  
 SBAR #2175

BW	WW	YW	Milk
+2.3	+65	+118	+25

**LOT 54**

Birth Date 3/17/23

*Recommended for Heifers*

**y3177**

BW	82
NOV #	825
ADJ 205	700
Act WR	101
ADJ 365	1201
Act YR	102
SALE #	1220
PAP	46

SAV President 6847  
 SBAR President 0105  
 SBAR Pride 210-070  
**SBAR #3177**  
 Mill Bar Hickock 7242  
 SBAR #9017  
 SBAR #7227

BW	WW	YW	Milk
+1.3	+68	+115	+32

**LOT 51** AAA 20844014

Birth Date 2/19/23

*EMBRYO*

**w323**

BW	90
NOV #	850
ADJ 205	734
Act WR	114
ADJ 365	1201
Act YR	107
SALE #	1285
PAP	50+

SAV Resource 1441  
 SAV Territory 7225  
 SAV Emblynette 3293  
**SBAR Territory 323**  
 SAV Bismarck 5682  
 SBAR Blackbird 065-222  
 SBAR Blackbird 4296-065

BW	WW	YW	Milk
+1.5	+71	+123	+28

HD50K

**LOT 55** AAA 20843885

Birth Date 3/01/23

*EMBRYO*

**w3031**

BW	82
NOV #	760
ADJ 205	636
Act WR	100
ADJ 365	1150
Act YR	100
SALE #	1200
PAP	43

SAV Renown 3439  
 SAV Renovation 6822  
 SAV Madame Pride 0151  
**SBAR Renovation 3031**  
 Sitz Upward 307R  
 SBAR Pride 210-070  
 SBAR Pride 001-210

BW	WW	YW	Milk
+2.0	+63	+116	+27

HD50K

**LOT 52** AAA 20845576

Birth Date 4/01/23

*Recommended for Heifers*

**w3175**

BW	74
NOV #	750
ADJ 205	681
Act WR	100
ADJ 365	1259
Act YR	102
SALE #	1230
PAP	50+

SAV Territory 7225  
 SBAR Territory 0130  
 SBAR Pride 210-070  
**SBAR Territory 0130-3175**  
 Connealy Final Product  
 SBAR Pride 510-457  
 SBAR Pride 1420-510

BW	WW	YW	Milk
-.7	+51	+97	+29

HD50K

**LOT 56** AAA 20842875

Birth Date 2/22/23

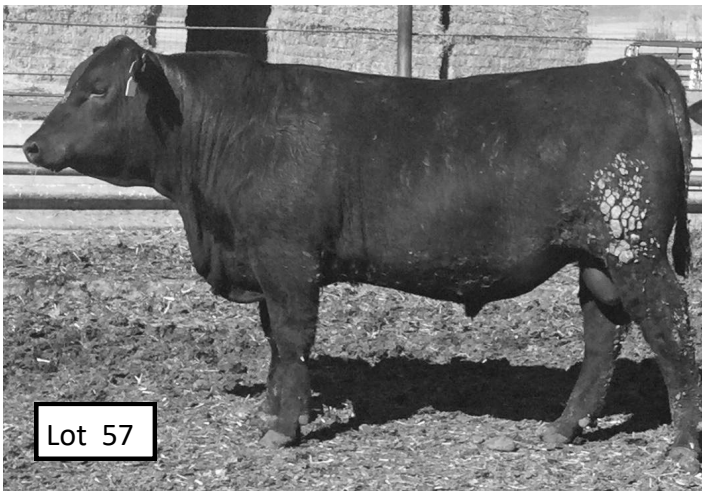
**w397**

BW	92
NOV #	800
ADJ 205	698
Act WR	108
ADJ 365	1130
Act YR	100
SALE #	1210
PAP	50+

SAV America 8018  
 SAV Glory Days 1832  
 SAV Madame Pride 3145  
**SBAR Glory Days 397**  
 SAV Resource 1441  
 SBAR Dixie Erica 484-796  
 SBAR Dixie Erica 705-484

BW	WW	YW	Milk
+4.2	+74	+139	+15

HD50K



**LOT 57** \_\_\_\_\_ Birth Date 2/25/23

**w391**

BW	84
NOV #	795
ADJ 205	631
Act WR	96
ADJ 365	1130
Act YR	100
SALE #	1205
PAP	43

SAV Rainfall 6846  
 SAV Bloodline 9578  
**SBAR #391**  
 SAV Emblynette 2369  
 SAV Resource 1441  
**SBAR #989**  
**SBAR #345**

BW	WW	YW	Milk
+3.3	+66	+120	+20

**LOT 59** \_\_\_\_\_ Birth Date 3/24/23

**w3140**

BW	77
NOV #	760
ADJ 205	662
Act WR	96
ADJ 365	1141
Act YR	98
SALE #	1145
PAP	50+

Sitz Tucker 282E  
 SBAR Maternal Power 0098  
 SAV Blackcap May 5833  
**SBAR #3140**  
 Vision Unanimous  
 SBAR Dixie Erica 965-8099  
 SBAR Dixie Erica 129-965

BW	WW	YW	Milk
+2.9	+70	+127	+21

**LOT 58** AAA 20844006 Birth Date 2/22/23  
*EMBRYO Recommended for Heifers*

**w398**

BW	78
NOV #	835
ADJ 205	679
Act WR	105
ADJ 365	1117
Act YR	99
SALE #	1195
PAP	43

Coleman Charlo 0256  
 SAV President 6847  
 SAV Blackcap May 4136  
**SBAR President 398**  
 SAV 8180 Traveler 004  
 SBAR Dixie Erica 129-857  
 SBAR Dixie Erica 129

BW	WW	YW	Milk
+1.5	+68	+110	+31

HD50K

**LOT 60** AAA 20842887 Birth Date 3/15/23

**w3097**

BW	65
NOV #	740
ADJ 205	693
Act WR	101
ADJ 365	1125
Act YR	97
SALE #	1160
PAP	42

SAV Rainfall 6846  
 SBAR Rainfall 066  
 SBAR Pride 210-070  
**SBAR Rainfall 066-3097**  
 SITZ Logic Y46  
 SBAR Dixie Erica 857-6029  
 SBAR Dixie Erica 129-857

BW	WW	YW	Milk
+4.2	+67	+114	+27

HD50K

**LOT 61** AAA 20843884 Birth Date 2/28/23  
*EMBRYO Recommended for Heifers*

**w3033**

BW	82
NOV #	740
ADJ 205	653
Act WR	100
ADJ 365	1173
Act YR	103
SALE #	1225
PAP	36

SAV Renown 3439  
 SAV Renovation 6822  
 SAV Madame Pride 0151  
**SBAR Renovation 3033**  
 Sitz Upward 307R  
 SBAR Pride 210-070  
 SBAR Pride 001-210

BW	WW	YW	Milk
+1.5	+58	+107	+25

HD50K



**Livestock Auction**

**ALL NEW PUREBRED PLATFORM**

[Bid.SuperiorLivestock.com](http://Bid.SuperiorLivestock.com)

**LOT 62** AAA 20843890 Birth Date 3/01/23

EMBRYO

**w3039**

BW	82
NOV #	780
ADJ 205	645
Act WR	100
ADJ 365	1173
Act YR	103
SALE #	1220
PAP	36

Marcys Scale House  
 SAV Scale House 0845  
 SAV Blackcap May 1416  
**SBAR Scale House 3039**  
 Sitz Upward 307R  
 SBAR Pride 210-070  
 SBAR Pride 001-210

BW	WW	YW	Milk
+1.9	+72	+131	+35

HD50K

**LOT 66** AAA 20844008 Birth Date 2/25/23

EMBRYO

**w393**

BW	84
NOV #	765
ADJ 205	647
Act WR	100
ADJ 365	1090
Act YR	100
SALE #	1160
PAP	36

SAV Resource 1441  
 SAV Territory 7225  
 SAV Emblynette 3293  
**SBAR Territory 393**  
 SAV 8180 Traveler 004  
 SBAR Dixie Erica 129-857  
 SBAR Dixie Erica 129

BW	WW	YW	Milk
+4.0	+73	+116	+14

HD50K

**LOT 63** AAA 20842892 Birth Date 2/25/23

**w382**

BW	85
NOV #	730
ADJ 205	624
Act WR	96
ADJ 365	1144
Act YR	101
SALE #	1200
PAP	35

SAV Rainfall 6846  
 SAV Bloodline 9578  
 SAV Emblynette 2369  
**SBAR Bloodline 382**  
 Still in the Rough 201  
 SBAR Dixie Erica 965-8098  
 SBAR Dixie Erica 129-965

BW	WW	YW	Milk
+4.0	+64	+117	+29

HD50K

**LOT 67** AAA 20842871 Birth Date 3/21/23

Recommended for Heifers

**w3124**

BW	78
NOV #	725
ADJ 205	648
Act WR	95
ADJ 365	1173
Act YR	101
SALE #	1180
PAP	50+

SAV Territory 7225  
 SBAR Territory 168  
 SBAR Pride 210-070  
**SBAR Territory 168-3124**  
 Sitz Upward 307R  
 SBAR Rachel 7001-553  
 SBAR Rachel 455-7001

BW	WW	YW	Milk
+2.0	+63	+117	+27

HD50K

**LOT 64** Birth Date 3/06/23

**y3082**

BW	86
NOV #	770
ADJ 205	692
Act WR	106
ADJ 365	1194
Act 105	105
SALE #	1205
PAP	45

SAV Rainfall 6846  
 SAV Bloodline 9578  
 SAV Emblynette 2369  
**SBAR #3082**  
 Sitz Upward 307R  
 SBAR #0037  
 SBAR Pride 001-210

BW	WW	YW	Milk
+2.9	+69	+129	+22



**LOT 65** AAA 20844009 Birth Date 2/26/23

EMBRYO

**w3028**

BW	87
NOV #	825
ADJ 205	691
Act WR	106
ADJ 365	1112
Act YR	100
SALE #	1185
PAP	41

SAV Resource 1441  
 SAV Territory 7225  
 SAV Emblynette 3293  
**SBAR Territory 3028**  
 SAV 8180 Traveler 004  
 SBAR Dixie Erica 129-857  
 SBAR Dixie Erica 129

BW	WW	YW	Milk
+3.0	+79	+125	+18

HD50K

**LOT 68** AAA 20844011 Birth Date 2/24/23

EMBRYO

**w366**

BW	92
NOV #	825
ADJ 205	711
Act WR	108
ADJ 365	1103
Act YR	101
SALE #	1185
PAP	47

SAV Recharge 3436  
 SAV Circuit Breaker 7136  
 SAV Madame Pride 3145  
**SBAR Circuit Breaker 366**  
 SAV Registry 2831  
 SAV Blackcap May 5833  
 SAV Blackcap May 4136

BW	WW	YW	Milk
+5.2	+77	+139	+10

HD50K



**LOT 72** AAA 20842894 Birth Date 3/08/23

**w3070**

BW	86
NOV #	720
ADJ 205	674
Act WR	99
ADJ 365	1112
Act YR	96
SALE #	1145
PAP	46

SAV Territory 7225  
 SBAR Territory 0088  
 SBAR Pride 210-070  
**SBAR Territory 0088-3070**  
 SAV Renown 3439  
 SBAR Dixie Erica 012-9050  
 SBAR Dixie Erica 808-012

BW	WW	YW	Milk
+3.2	+64	+118	+21

HD50K

**LOT 69** AAA 20845577 Birth Date 2/28/23

**w3020**

BW	80
NOV #	650
ADJ 205	502
Act WR	100
ADJ 365	1068
Act YR	100
SALE #	1110
PAP	42

SAV America 8018  
 SAV Glory Days 1832  
 SAV Madame Pride 3145  
**SBAR Glory Days 3020**  
 SAV Resource 1441  
 SBAR Dixie Erica 4000-8135  
 SBAR Dixie Erica 840-4000

BW	WW	YW	Milk
+2.9	+70	+132	+28

HD50K

**LOT 73** AAA 20849551 Birth Date 2/24/23

**w364**

BW	82
NOV #	725
ADJ 205	660
Act WR	100
ADJ 365	1098
Act YR	100
SALE #	1155
PAP	36

SAV Renown 3439  
 SAV Abundance 6117  
 SAV Emblynette 7563  
**SBAR Abundance 364**  
 Sitz Upward 307R  
 SBAR Pride 210-070  
 SBAR Pride 001-210

BW	WW	YW	Milk
+1.7	+66	+127	+31

HD50K

**LOT 70** AAA 20849550 Birth Date 2/24/23

*EMBRYO*

**w374**

BW	85
NOV #	750
ADJ 205	650
Act WR	100
ADJ 365	1012
Act YR	92
SALE #	1095
PAP	40

SAV Renown 3439  
 SAV Abundance 6117  
 SAV Emblynette 7563  
**SBAR Abundance 374**  
 Sitz Upward 307R  
 SBAR Pride 210-070  
 SBAR Pride 001-210

BW	WW	YW	Milk
+2.4	+58	+108	+25

HD50K

**LOT 74** Birth Date 2/24/23

**y3029**

BW	80
NOV #	680
ADJ 205	559
Act WR	89
ADJ 365	1073
Act YR	94
SALE #	1140
PAP	46

SAV Renown 3439  
 SAV Abundance 6117  
 SAV Emblynette 7563  
**SBAR Abundance 3067**  
 Sitz Upward 307R  
 SBAR #6132  
 SBAR #w0103

BW	WW	YW	Milk
+3.2	+57	+105	+31

**LOT 71** AAA 20844002 Birth Date 3/01/23

*EMBRYO*

**w3226**

BW	82
NOV #	730
ADJ 205	607
Act WR	100
ADJ 365	1116
Act YR	100
SALE #	1165
PAP	40

SAV Regard 4863  
 SAV Quarterback 7933  
 SBAR Blackbird 4296-762  
**SBAR Quarterback 3226**  
 SAV Bismarck 5682  
 SBAR Blackbird 065-222  
 SBAR Blackbird 4296-065

BW	WW	YW	Milk
+3.7	+80	+135	+33

HD50K





© Klr Lambert

**LOT 78** \_\_\_\_\_ Birth Date 2/28/23

**y3071**

BW	76
NOV #	770
ADJ 205	653
Act WR	100
ADJ 365	1073
Act YR	96
SALE #	1110
PAP	37

SAV Rainfall 6846  
 SAV Bloodline 9578  
 SAV Emblynette 2369  
**SBAR #3071**  
 SBAR Resource 779  
 SBAR #0103  
 SBAR #597

BW	WW	YW	Milk
+3.8	+66	+121	+23

**LOT 75** AAA 20849547 \_\_\_\_\_ Birth Date 3/06/23

**w3067**

BW	85
NOV #	735
ADJ 205	645
Act WR	96
ADJ 365	1066
Act YR	94
SALE #	1120
PAP	41

SAV Renown 3439  
 SAV Abundance 6117  
 SAV Emblynette 7563  
**SBAR Abundance 3067**  
 SAV Resource 1441  
 SBAR Emblynette 244-8140  
 SBAR Emblynette 244

BW	WW	YW	Milk
+3.7	+56	+104	+33

HD50K

**LOT 79** AAA 20842866 \_\_\_\_\_ Birth Date 2/17/23

**w312**

BW	80
NOV #	670
ADJ 205	693
Act WR	100
ADJ 365	1063
Act YR	100
SALE #	1090
PAP	50+

SAV Ajax 8885  
 SBAR Ajax 0045  
 SAV Blackcap May 5833  
**SBAR Ajax 0045-312**  
 SAV America 8018  
 SBAR Blackcap May 5833-143  
 SAV Blackcap May 5833

BW	WW	YW	Milk
+3.2	+60	+102	+28

HD50K

**LOT 76** \_\_\_\_\_ Birth Date 3/10/23

**y3107**

BW	78
NOV #	725
ADJ 205	624
Act WR	96
ADJ 365	1097
Act YR	97
SALE #	1140
PAP	50+

SAV Territory 7225  
 SBAR Territory 181  
 SBAR Emma E 207-020  
**SBAR #3107**  
 Sitz Logic Y46  
 SBAR #4597  
 SBAR Emblynette 229

BW	WW	YW	Milk
+2.9	+64	+118	+26

**LOT 80** \_\_\_\_\_ Birth Date 3/28/23

*Recommended for Heifers*

**y3280**

BW	70
NOV #	780
ADJ 205	748
Act WR	103
ADJ 365	1098
Act YR	105
SALE #	1105
PAP	38

SAV Territory 7225  
 SBAR Territory 0130  
 SBAR Pride 210-070  
**SBAR #3280**  
 Raven Power Ball 53  
 SBAR #6073  
 SBAR #4176

BW	WW	YW	Milk
+2.0	+63	+120	+27

**LOT 77** \_\_\_\_\_ Birth Date 2/27/23

*Recommended for Heifers*

**y3035**

BW	72
NOV #	675
ADJ 205	581
Act WR	89
ADJ 365	1089
Act YR	96
SALE #	1110
PAP	39

SAV Rainfall 6846  
 SAV Bloodline 9578  
 SAV Emblynette 2369  
**SBAR #3035**  
 SAV Rainfall 6846  
 SBAR #0074  
 SBAR #8165

BW	WW	YW	Milk
+2.8	+65	+119	+22

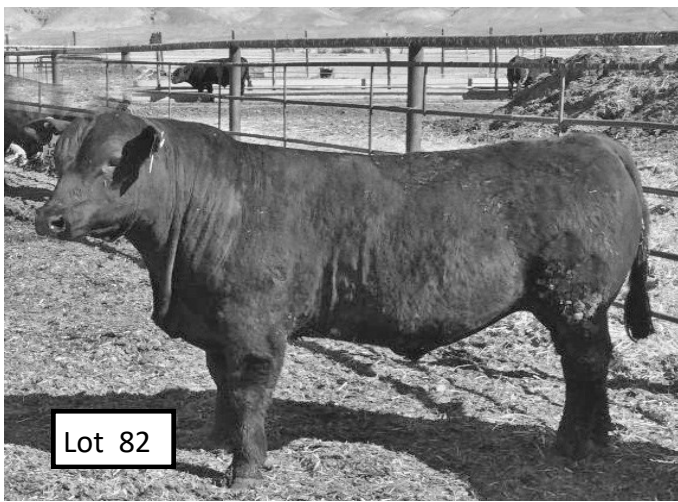
**LOT 81** \_\_\_\_\_ Birth Date 2/25/23

**y3025**

BW	80
NOV #	765
ADJ 205	645
Act WR	98
ADJ 365	1170
Act YR	101
SALE #	1220
PAP	37

SAV President 6847  
 SBAR President 092  
 SAV Blackcap May 5833  
**SBAR #3025**  
 SAV Renown 3439  
 SBAR #9037  
 SBAR #9020

BW	WW	YW	Milk
+3.8	+75	+133	+20



**LOT 85** \_\_\_\_\_ Birth Date 2/11/23  
*Recommended for Heifers*

**w302**

BW	70
NOV #	690
ADJ 205	540
Act WR	89
ADJ 365	995
Act YR	90
SALE #	1090
PAP	40

Coleman Charlo 0256  
 SAV Rainfall 6846  
 SAV Blackcap May 4136  
**SBAR #302**  
 POSS Achievement  
 SBAR #1050  
 SBAR #922

BW	WW	YW	Milk
-8	+60	+118	+21

**LOT 82** AAA 20842883 \_\_\_\_\_ Birth Date 2/17/23  
*Recommended for Heifers*

**w313**

BW	72
NOV #	755
ADJ 205	669
Act WR	96
ADJ 365	1171
Act YR	99
SALE #	1175
PAP	41

Marcys Scale Crusher  
 SAV Ease 0840  
 SAV Blackcap May 1416  
**SBAR Ease 313**  
 SAV Territory 7225  
 SBAR Blackcap May 5833-1051  
 SBAR Blackcap May 5833

BW	WW	YW	Milk
-2	+62	+106	+13

HD50K

**LOT 86** \_\_\_\_\_ Birth Date 3/25/23

**Y3256**

BW	80
NOV #	775
ADJ 205	660
Act WR	99
ADJ 365	1256
Act YR	105
SALE #	1240
PAP	48

SAV Territory 7225  
 SBAR Territory 0130  
 SBAR Pride 210-070  
**SBAR #3256**  
 Connealy In Focus  
 SBAR #4145  
 SBAR #1147

BW	WW	YW	Milk
+2.3	+78	+142	+26

**LOT 83** AAA 20845575 \_\_\_\_\_ Birth Date 2/14/23

**w311**

BW	68
NOV #	660
ADJ 205	592
Act WR	100
ADJ 365	1094
Act YR	100
SALE #	1095
PAP	50+

Sitz Response 405C  
 SBAR Response 937  
 SBAR Dixie Erica 975-7130  
**SBAR Response 937-311**  
 SAV Territory 7225  
 SBAR Pride 070-160  
 SBAR Pride 210-070

BW	WW	YW	Milk
+4.2	+72	+130	+13

HD50K

**LOT 84** \_\_\_\_\_ Birth Date 3/20/23

**w3121**

BW	75
NOV #	690
ADJ 205	641
Act WR	91
ADJ 365	1079
Act YR	92
SALE #	1100
PAP	38

Sitz Tucker 282E  
 SBAR Maternal Power 0098  
 SAV Blackcap May 5833  
**SBAR #3121**  
 Connealy Conquest  
 SBAR Barbaramere 6080-895  
 SBAR Barbaramere 823-6080

BW	WW	YW	Milk
+3.5	+58	+92	+24





**LOT 87** AAA 20842870 Birth Date 3/10/23

*Recommended for Heifers*

**w3078**

BW	65
NOV #	670
ADJ 205	624
Act WR	92
ADJ 365	1032
Act YR	
SALE #	1080
PAP	44

SAV Renown 3439  
 SBAR Renown 9002  
 SBAR Kinochtry Beauty 2009  
**SBAR Renown 9002-3078**  
 SBAR Dimension 857-327  
 SBAR Blackbird 274-547  
 SBAR Blackbird 647-274

BW	WW	YW	Milk
-.1	+55	+86	+18

HD50K



**SUPERIOR**

**Livestock Auction**

**ALL NEW PUREBRED PLATFORM**

[Bid.SuperiorLivestock.com](http://Bid.SuperiorLivestock.com)

**LOT 88** AAA 20844010 Birth Date 2/21/23

*EMBRYO*

**w344**

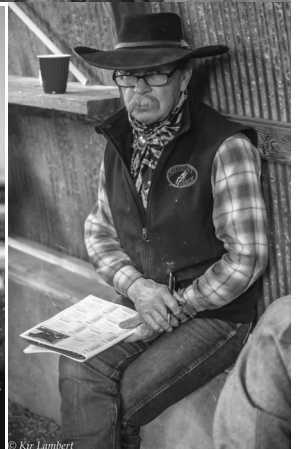
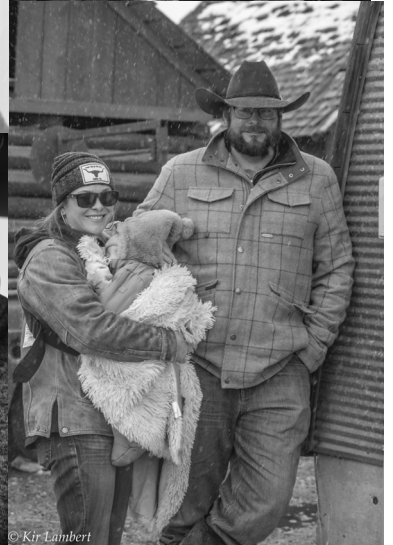
BW	85
NOV #	750
ADJ 205	627
Act WR	100
ADJ 365	949
Act YR	100
SALE #	1090
PAP	40

SAV Resource 1441  
 SAV Territory 7225  
 SAV Emblynette 3293  
**SBAR Territory 344**  
 SAV 8180 Traveler 004  
 SBAR Dixie Erica 129-857  
 SBAR Dixie Erica 129

BW	WW	YW	Milk
+.7	+63	+96	+14

HD50K





*What our customers have to say about Silver Bit bulls.....*



"I have been buying Silver Bit bulls for over 30 years and have always been happy with how they put pounds on calves, produce mother cows with good bags and mothering ability, hold up on our range that is over 6000 ' altitude. Scott and Gwen are always great to deal with and always stand behind the bulls they sell." ....

**Herb Whitworth, Elkhorn Ranch, Mackay, ID**



"Small Ranches have bought bulls from Silver Bit for more than 25 years. The bulls are easy to handle and produce some really nice calves. The calves have always done very well for us. They are easy to handle, they have good conformation & gain well. The replacement heifers do well in our mountainous terrain. We have been very satisfied with the bulls we have purchased & plan on continuing to add their lineage to our herd."

**Kevin Small, Small Ranches, Dubois, ID**



"We have bought bulls from Scott & Gwen for several years and never been disappointed with the cattle. Being able to buy a set of bulls in volume that are full and half brothers from one place is great for us. We come back year after year for these bulls because they survive on the high desert we run on and that has also carried over and helped put longevity into our replacements. Since implementing Silver Bit Angus bulls, we have notices our carcass reports getting better & better, that has earned us repeat buyers on the calves. The docility of the bulls has improved greatly over the years, and anyone can appreciate that. These are truly good bulls from outstanding people."

**Pat Hendren & McCall Hopkins, Hendren Farms, Montevieu, ID**



"We have bought bulls from Silver Bit since the beginning and have continually used them for the past 25+ years because they perform. Calves are vigorous when they are born, gain and grade well. Cows are good mothers with high fertility and breed back without extra care. Bulls stay sound and healthy and can cover our rugged country. They Work." ...**Joe Caywood, Tendoy, ID**



*Thank You for your business!*

*The Whitworth's*

*Scott & Gwen, Dan, Amy & Sadie, Chance, Autumn, Eli, Emari, & Colter, Bob, Jamie, Charli & Jaxon*



*Replacement Heifer Calves*

Pen # \_\_\_\_\_ No. Head \_\_\_\_\_ Price \_\_\_\_\_ Buyer \_\_\_\_\_

Pen # \_\_\_\_\_ No. Head \_\_\_\_\_ Price \_\_\_\_\_ Buyer \_\_\_\_\_

Pen # \_\_\_\_\_ No. Head \_\_\_\_\_ Price \_\_\_\_\_ Buyer \_\_\_\_\_

Pen # \_\_\_\_\_ No. Head \_\_\_\_\_ Price \_\_\_\_\_ Buyer \_\_\_\_\_

Pen # \_\_\_\_\_ No. Head \_\_\_\_\_ Price \_\_\_\_\_ Buyer \_\_\_\_\_

Pen # \_\_\_\_\_ No. Head \_\_\_\_\_ Price \_\_\_\_\_ Buyer \_\_\_\_\_

Pen # \_\_\_\_\_ No. Head \_\_\_\_\_ Price \_\_\_\_\_ Buyer \_\_\_\_\_

Pen # \_\_\_\_\_ No. Head \_\_\_\_\_ Price \_\_\_\_\_ Buyer \_\_\_\_\_

Pen # \_\_\_\_\_ No. Head \_\_\_\_\_ Price \_\_\_\_\_ Buyer \_\_\_\_\_

Pen # \_\_\_\_\_ No. Head \_\_\_\_\_ Price \_\_\_\_\_ Buyer \_\_\_\_\_

Pen # \_\_\_\_\_ No. Head \_\_\_\_\_ Price \_\_\_\_\_ Buyer \_\_\_\_\_

Pen # \_\_\_\_\_ No. Head \_\_\_\_\_ Price \_\_\_\_\_ Buyer \_\_\_\_\_

Pen # \_\_\_\_\_ No. Head \_\_\_\_\_ Price \_\_\_\_\_ Buyer \_\_\_\_\_

Pen # \_\_\_\_\_ No. Head \_\_\_\_\_ Price \_\_\_\_\_ Buyer \_\_\_\_\_

Pen # \_\_\_\_\_ No. Head \_\_\_\_\_ Price \_\_\_\_\_ Buyer \_\_\_\_\_

Pen # \_\_\_\_\_ No. Head \_\_\_\_\_ Price \_\_\_\_\_ Buyer \_\_\_\_\_

Pen # \_\_\_\_\_ No. Head \_\_\_\_\_ Price \_\_\_\_\_ Buyer \_\_\_\_\_

Pen # \_\_\_\_\_ No. Head \_\_\_\_\_ Price \_\_\_\_\_ Buyer \_\_\_\_\_

Pen # \_\_\_\_\_ No. Head \_\_\_\_\_ Price \_\_\_\_\_ Buyer \_\_\_\_\_

Pen # \_\_\_\_\_ No. Head \_\_\_\_\_ Price \_\_\_\_\_ Buyer \_\_\_\_\_

Delivery and freight on heifers is buyer's responsibility

**THANK YOU AGAIN!**

**BANK OF IDAHO FOR SPONSORING OUR STEAK LUNCH  
& VALLEY WIDE COOP FOR PROVIDING OUR BEVERAGES!**



# MAKE THE CO-OP CHOICE



## ENERGY

Propane, bulk fuel, oils  
& lubricants

[wvcenergy.com](http://wvcenergy.com)

## AGRONOMY

Precision agriculture,  
fertilizer & seed

[valleyag.com](http://valleyag.com)

## RETAIL

Farm supply, clothing,  
boots, fencing & feed

[shop.valleywidecoop.com](http://shop.valleywidecoop.com)

# Committed to our Ag Communities

- Great People & Service
- Production Lines of Credit
- Decisions Made Locally
- Equipment Financing
- Storage Financing
- Much More!



**BANK of IDAHO**  
COMMITTED TO COMMUNITY

*Commercial  
Lending*

[bankofidaho.com](http://bankofidaho.com) | 888.396.8757

Idaho Falls • Pocatello • Boise • St. Anthony • Ashton • Island Park • Twin Falls



## Delivery Instructions

Name \_\_\_\_\_

Cell # \_\_\_\_\_ Home Phone \_\_\_\_\_

Physical Address \_\_\_\_\_

City \_\_\_\_\_ State \_\_\_\_\_ Zip \_\_\_\_\_

Lots Purchased \_\_\_\_\_

Please give detailed directions, or draw map below.